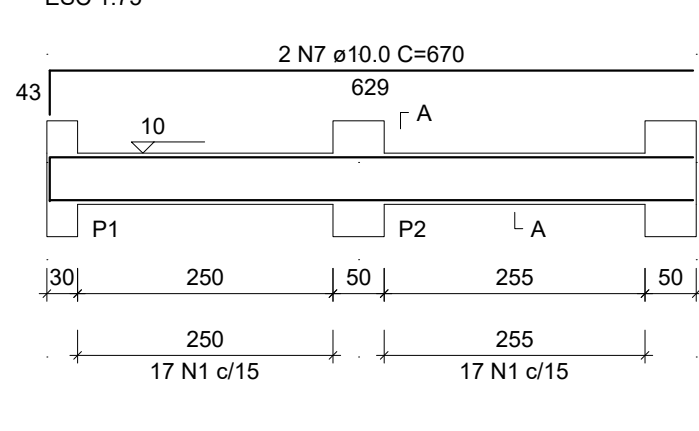
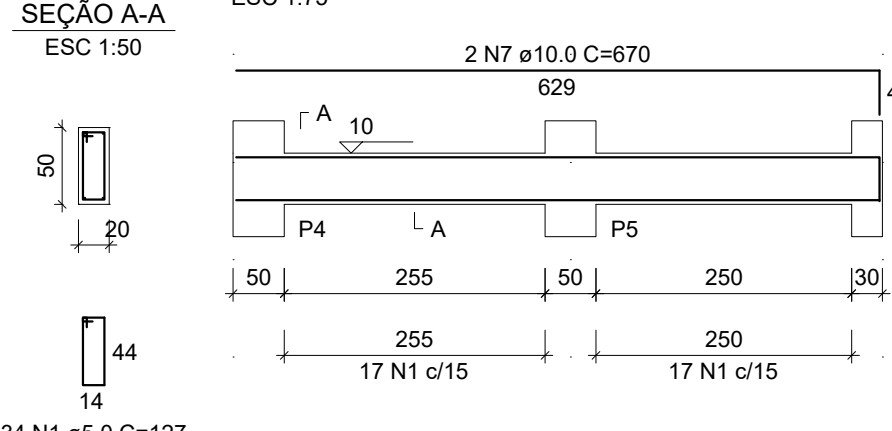


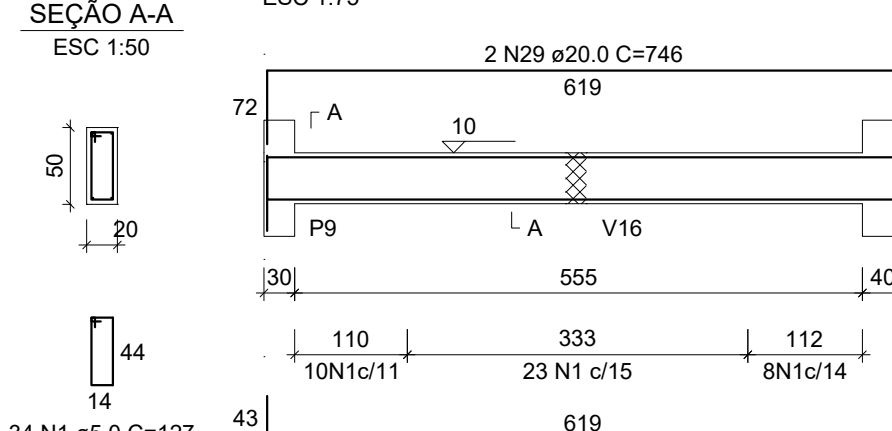
V1 (20 x 50)



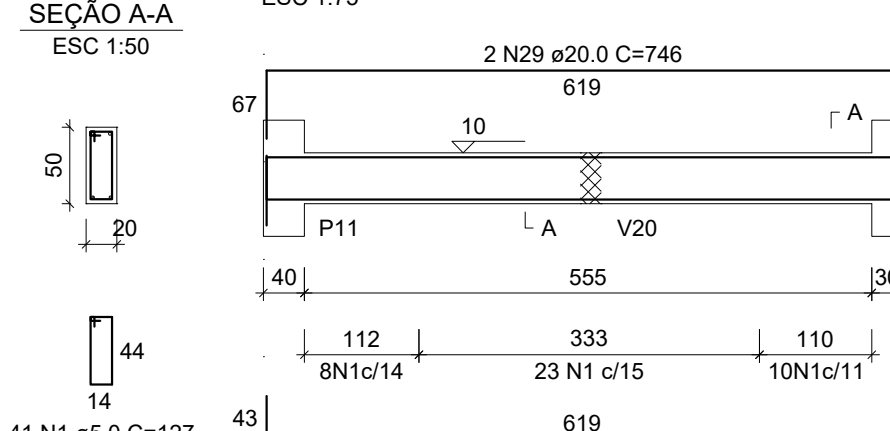
V2 (20 x 50)



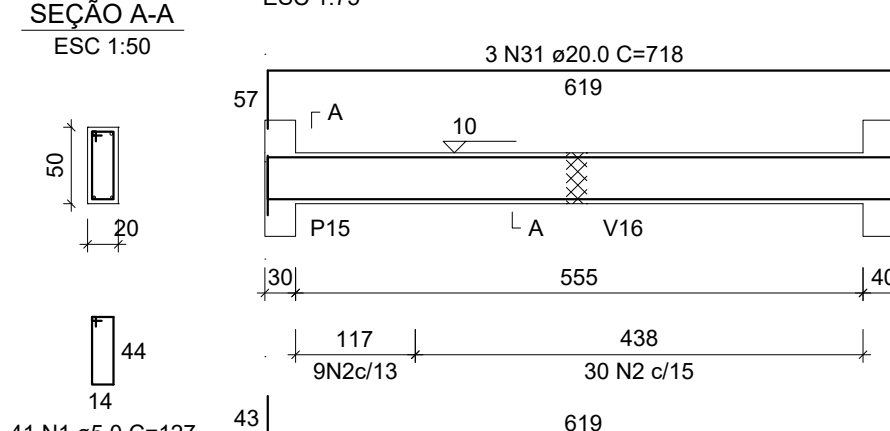
V3 (20 x 50)



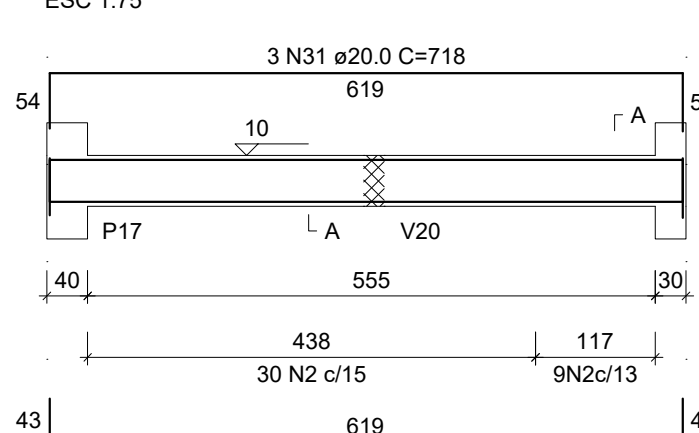
V4 (20 x 50)



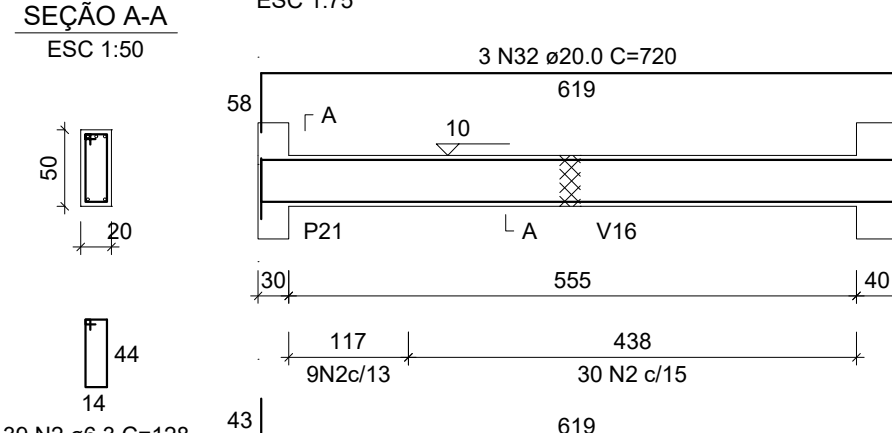
V5 (20 x 50)



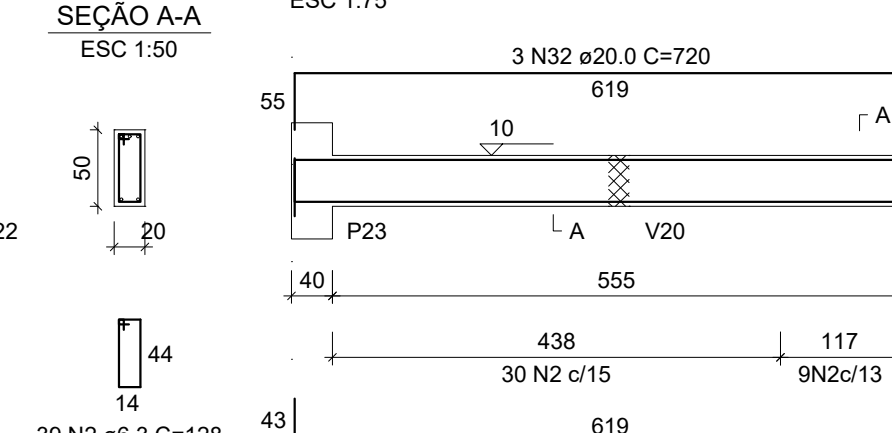
V6 (20 x 50)



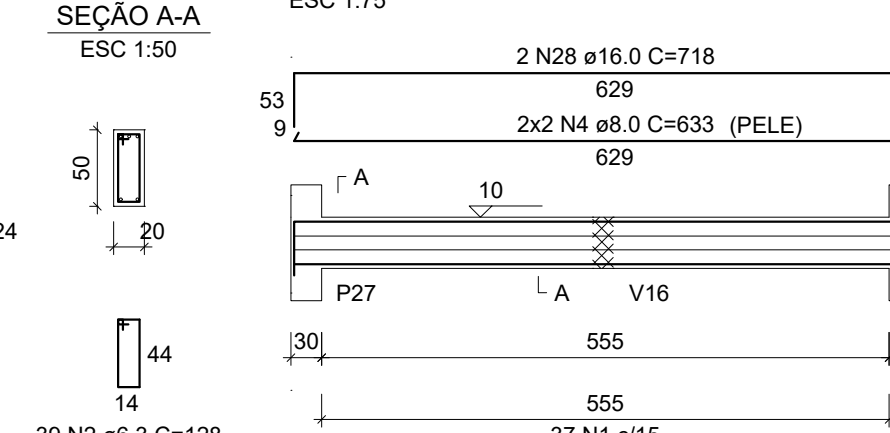
V7 (20 x 50)



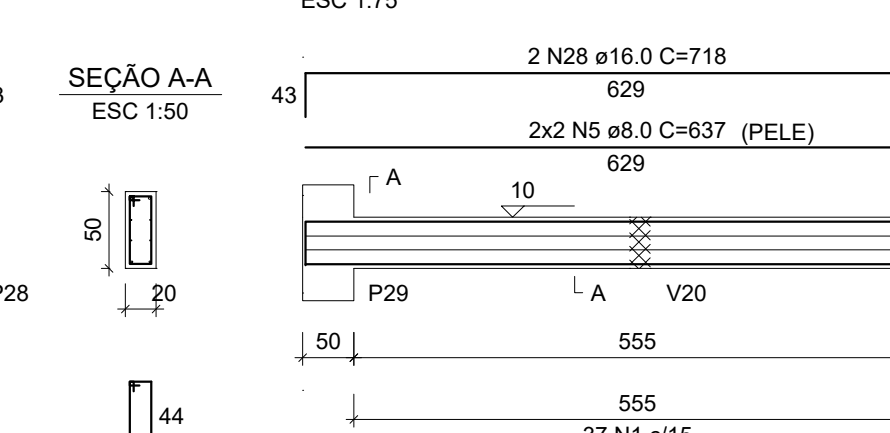
V8 (20 x 50)



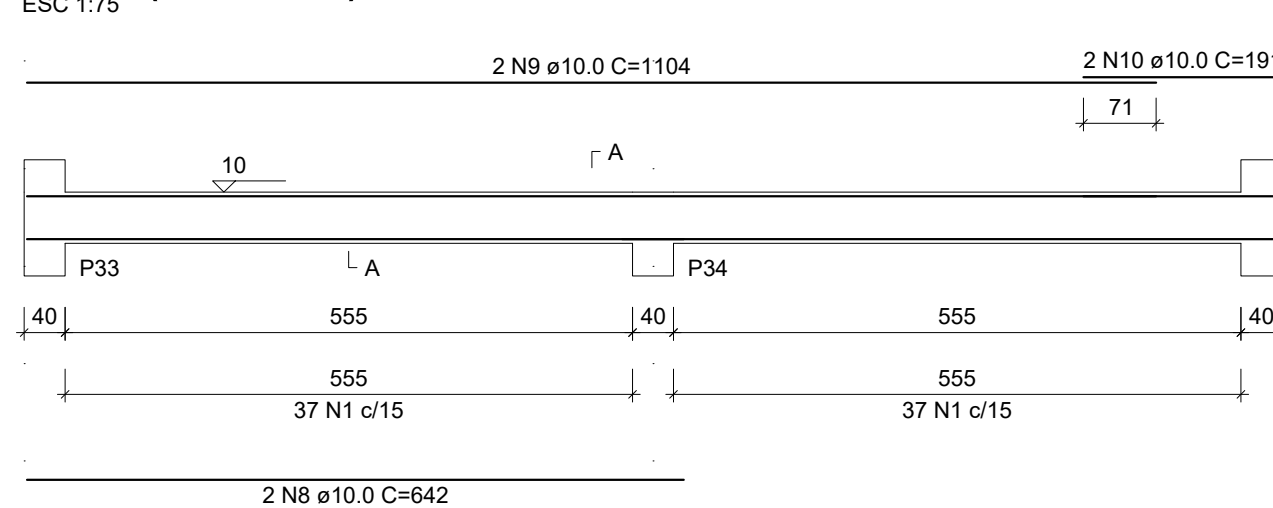
V9 (20 x 50)



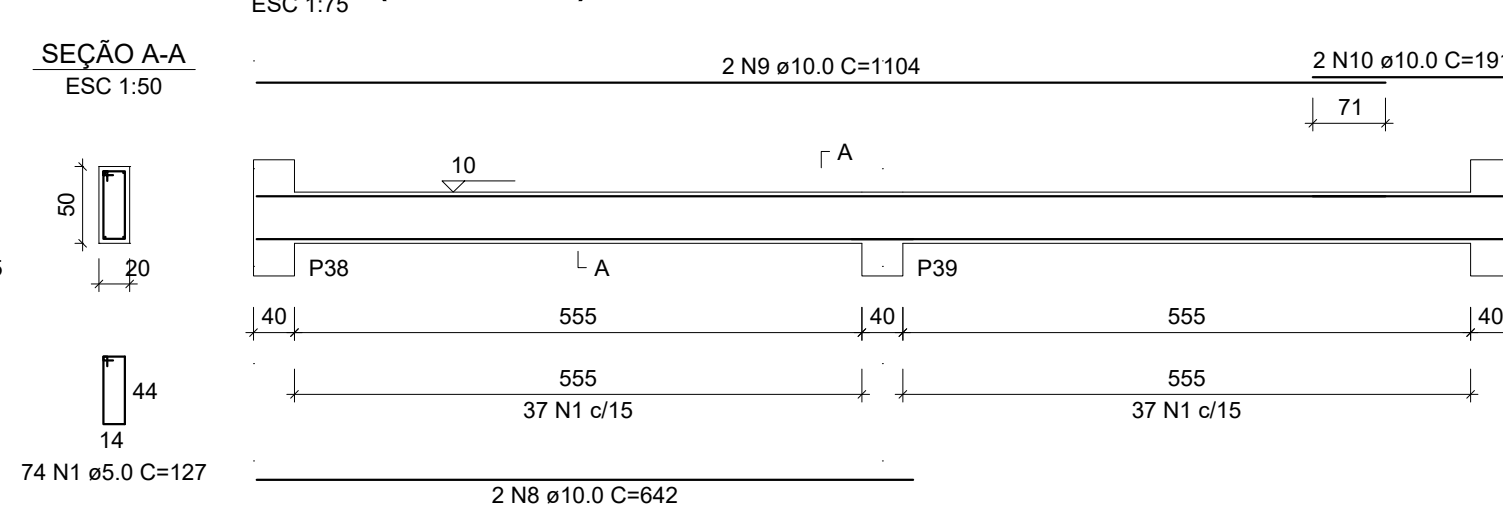
V10 (20 x 50)



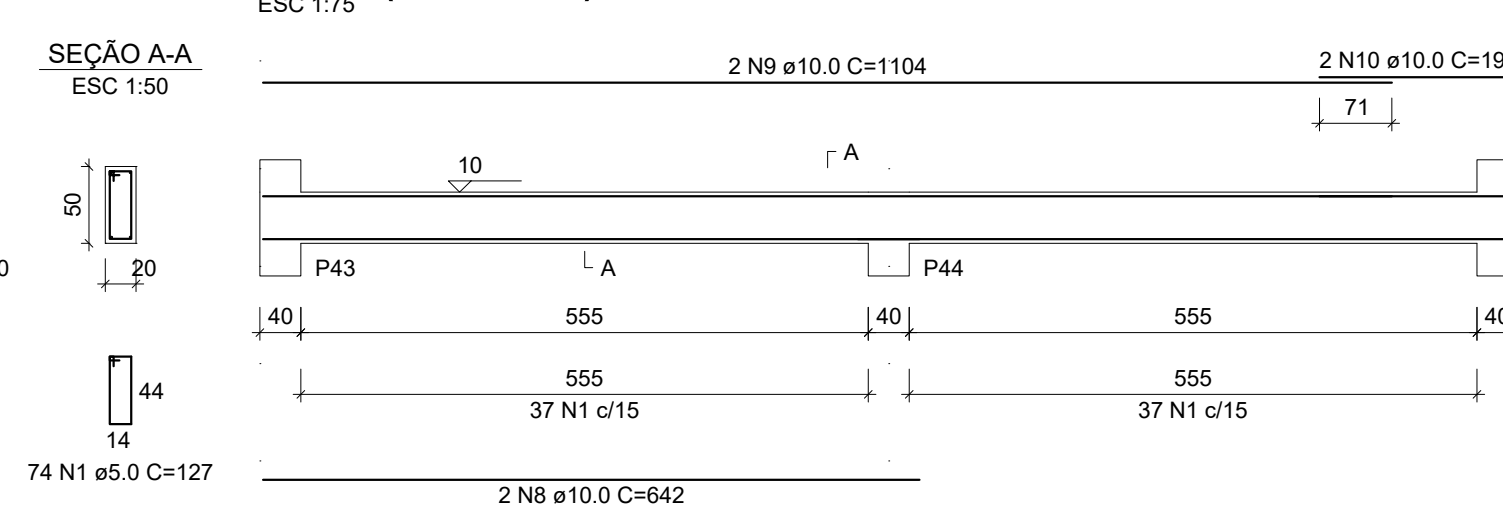
V11 (20 x 50)



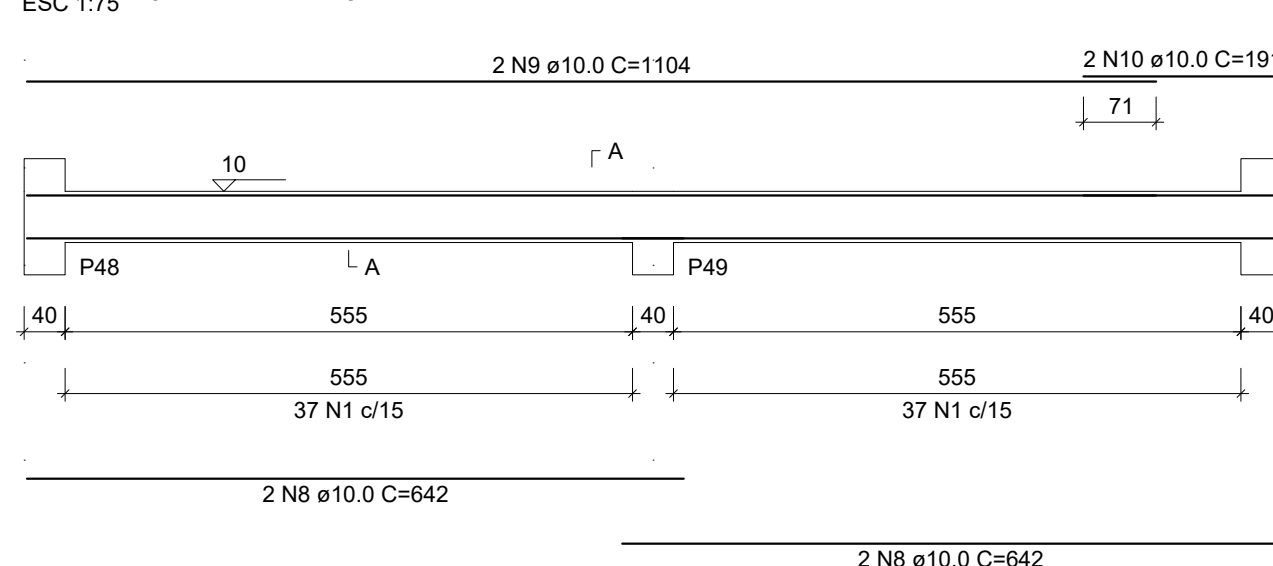
V12 (20 x 50)



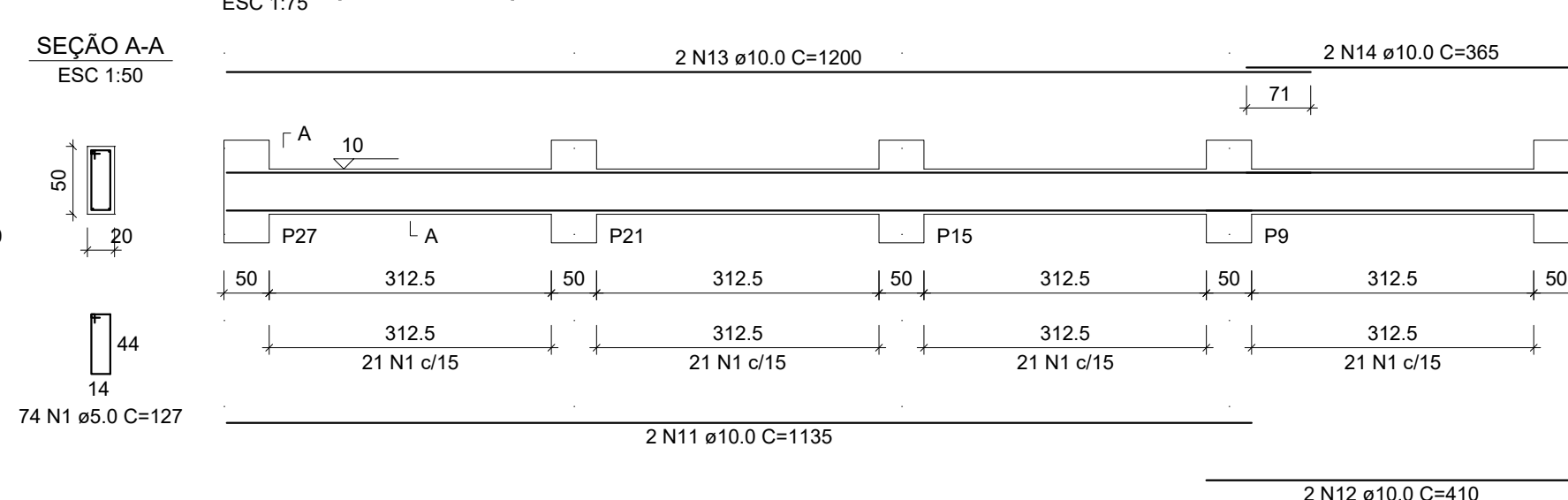
V13 (20 x 50)



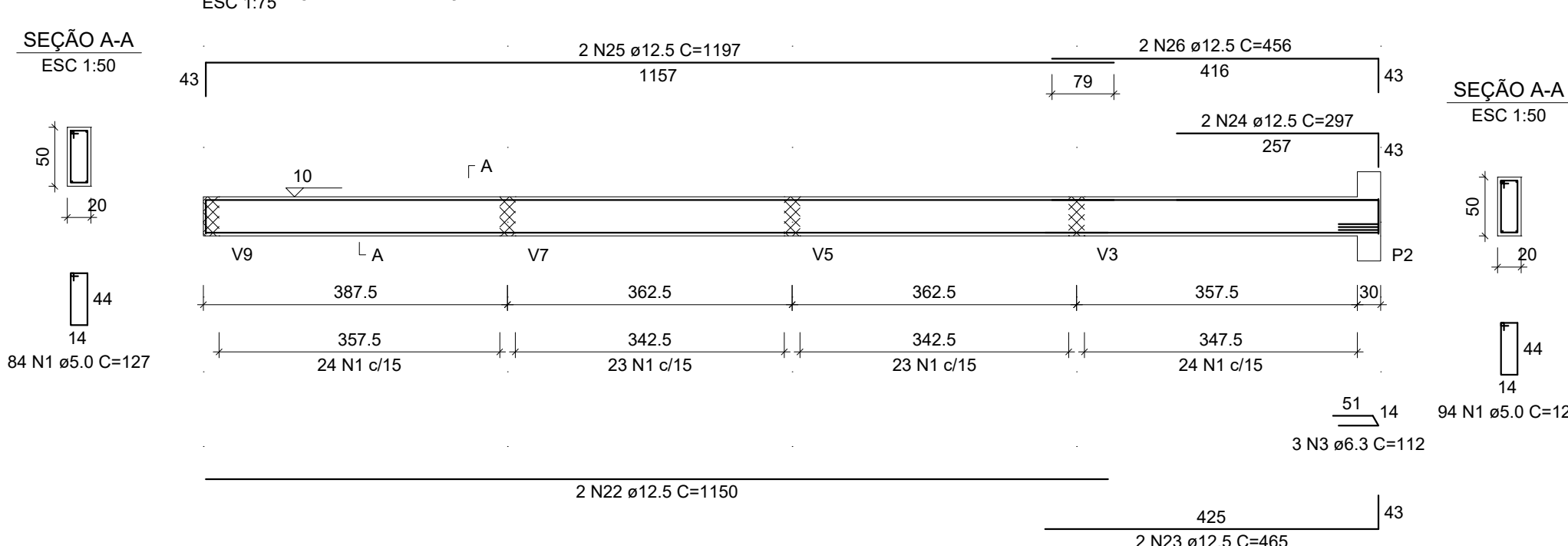
V14 (20 x 50)



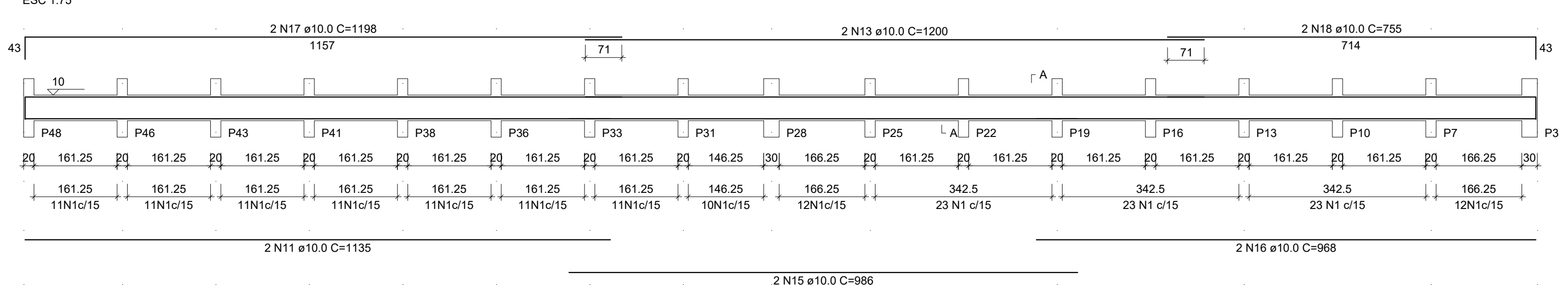
V15 (20 x 50)



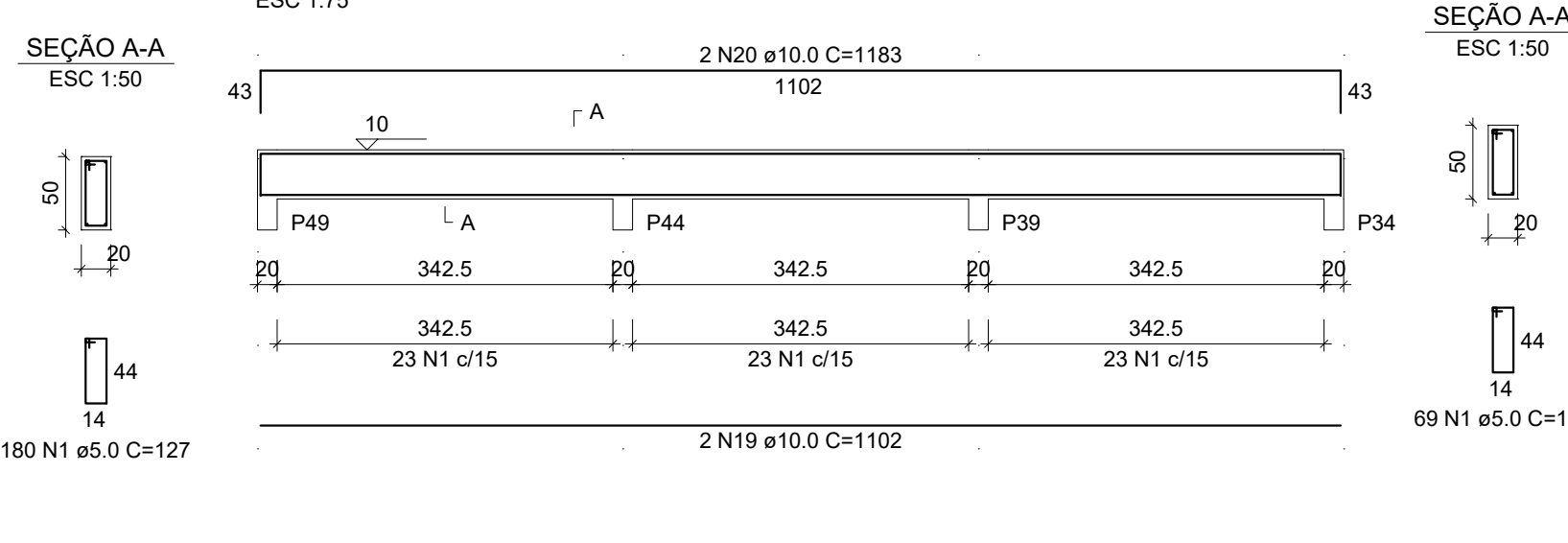
V16 (20 x 50)



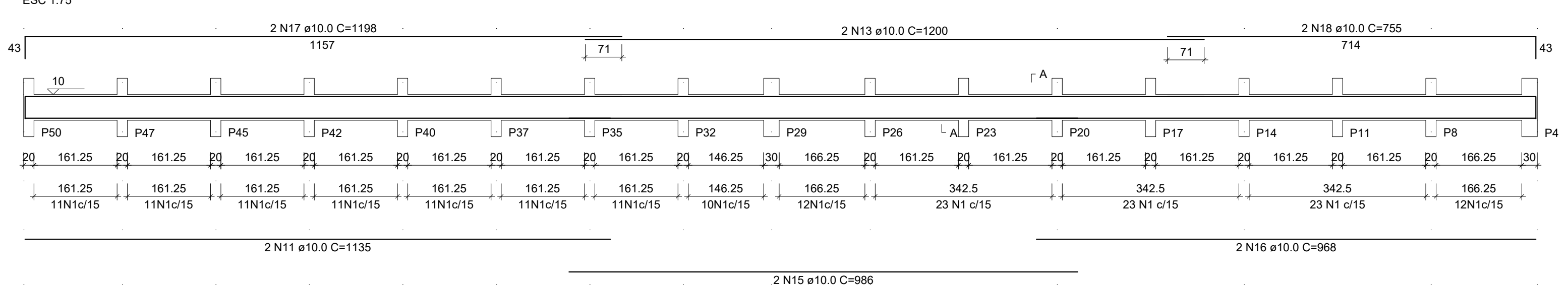
V17 (20 x 50)



V18 (20 x 50)



V19 (20 x 50)



RELAÇÃO DO AÇO

AÇO	N	DIAM (mm)	QUANT	C.UNIT (cm)	C.TOTAL (cm)
V1	1	5.0	1127	127	143129
V4	2	6.3	156	128	19968
V7	3	8.0	4	633	2532
V10	4	8.0	4	637	2548
V13	5	8.0	4	629	2516
V16	6	10.0	4	670	2680
V19	7	10.0	4	642	10272
	8	10.0	16	1104	8832
	9	10.0	8	191	1528
	10	10.0	6	1135	6810
	11	10.0	2	410	820
	12	10.0	2	1104	8832
	13	10.0	6	1200	7200
	14	10.0	2	365	730
	15	10.0	4	986	3944
	16	10.0	4	968	3872
	17	10.0	4	1198	4792
	18	10.0	4	755	3020
	19	10.0	2	1102	2204
	20	10.0	2	1183	2366
	21	12.5	4	629	2516
	22	12.5	2	1150	2300
	23	12.5	2	465	930
	24	12.5	2	297	594
	25	12.5	2	1197	2394
	26	12.5	2	456	912
	27	16.0	4	698	2792
	28	16.0	4	718	2872
	29	20.0	4	746	2984
	30	20.0	8	693	5544
	31	20.0	6	718	4308
	32	20.0	6	720	4320

RESUMO DO AÇO

AÇO	DIAM (mm)	C.TOTAL (m)	QUANT + 10% (Barras)	PESO + 10% (kg)
CA50	6.3	203	19	54.7
	8.0	50.8	5	22
	10.0	615.9	57	417.7
	12.5	96.5	9	102.2
	16.0	56.6	6	98.3
	20.0	171.6	16	465.4
CA60	5.0	1431.3	132	242.7

PESO TOTAL (kg)

CA50	1160.3
CA60	242.7

Volume de concreto (C-25) = 18.78 m³  
Área de forma = 206.67 m²



PREFEITURA MUNICIPAL DE LAJINHA

Obra:			
Construção de estação para transbordo de resíduos sólidos do Município de Lajinha/MG;			
Responsável Técnico:		ART. VINCULADA:	
LUCAS HENRIQUE S. PAIVA - CREA-MG: 226.732/D		MG20253818537	
Proprietário:		CONVÊNIO:	
PREFEITURA MUNICIPAL DE LAJINHA/MG		Lucas Henrique da Silva Paiva	
Endereço:			
Rodovia MG-108 - Coordenadas Geográficas: 20°12'12.5"S 41°42'43.6"W			
Discriminação:			
ESTRUTURAL EXECUTIVO			
Folha:			
4			
de: 11			
Data:	MÊS 03/2025	Escala:	Indicada
Área:	360,00m²	Conferência:	LUCAS PAIVA